



FOR YOUTH DEVELOPMENT®  
FOR HEALTHY LIVING  
FOR SOCIAL RESPONSIBILITY

# MORE PEOPLE MORE HEALTH MORE SUPPORT

Benefit to Community in 2014  
**THE FAMILY YMCA**

**8,182**  
people served

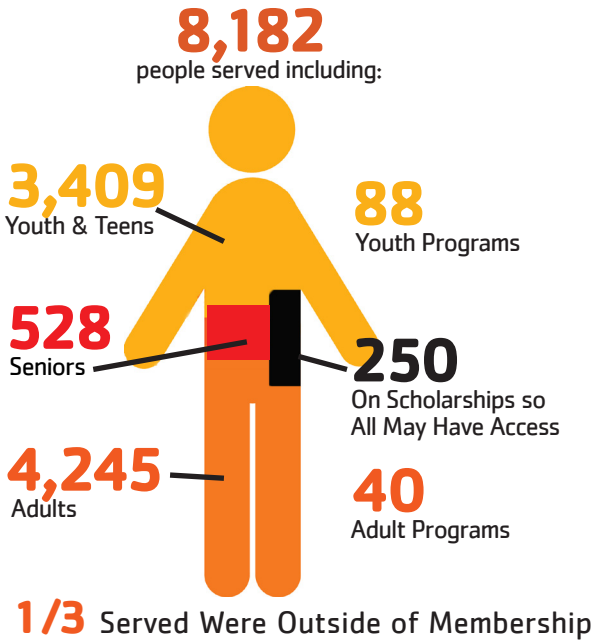


THE FAMILY YMCA, 1450 Iris Street, Los Alamos, NM 87544; ph: (505) 662-3100 [laymca.org](http://laymca.org)

**OUR MISSION:** To build individual, family and community strength by focusing on youth development, healthy living and social responsibility. As a charity, we ensure access for all.

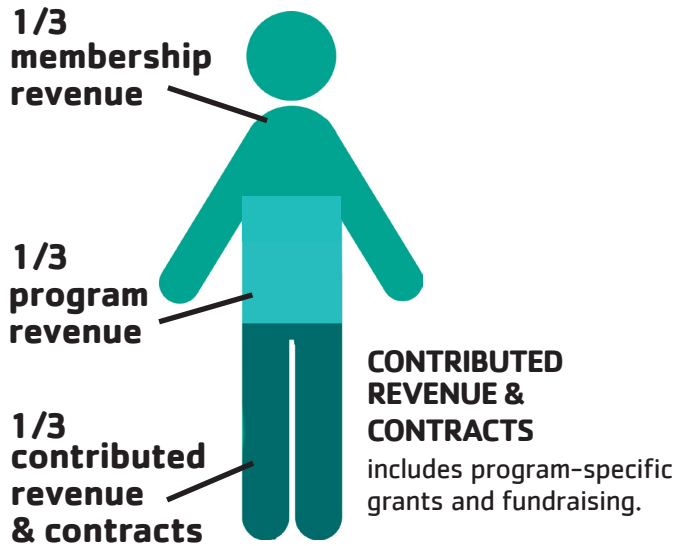
# BENEFIT TO COMMUNITY:

The Y impacted the health and well-being of **8,182** people in 128 programs at a **break-even cost**. This includes providing \$100,000 in scholarships to 250 people.



## HOW OUR WORK IS FUNDED:

**\$2.5 million revenue**



## SOCIALLY RESPONSIBLE

We believe in giving back and supporting our neighbors. To put these beliefs into action, we collaborate to address the outstanding needs in the communities we serve. Our partners help us develop skills and emotional well-being through health, education and jobs programs.

**250** Scholarships Awarded  
**\$100,000** In Financial Assistance Provided

**\$471,856** In Contracts to the Y To Provide Needed Services

**\$174,219** Annual Campaign Donations For Targeted Programs and Scholarships

**\$90,890** In Foundation and Grant Support for Targeted Programs, Leveraged for Community Good

**\$53,879** In United Way Funding For Targeted Programs

**\$792,194** Total Partnered Funding To Provide Needed Services

**283** Volunteers

**9,195** Volunteer Hours

**\$183,900** Value of Volunteer Work

## OUR PARTNERS INCLUDE:

NM DEPT. OF HEALTH • NM YCC • CITY OF ESPAÑOLA • LOS ALAMOS COUNTY • RIO ARRIBA COUNTY • SANTA FE COUNTY • RA & LA COUNTY COMMUNITY HEALTH COUNCILS • ESPAÑOLA VALLEY PUBLIC SCHOOLS • LOS ALAMOS PUBLIC SCHOOLS • UNITED WAY OF NNM • CON ALMA / NNM HGG FOUNDATION • CROSS CONNECTION, INC • DELLE FOUNDATION • FROST FOUNDATION • HATTON W. SUMNERS FOUNDATION • LOWES FOUNDATION • LOS ALAMOS MEDICAL CENTER • LOS ALAMOS NATIONAL BANK • MAR TECH SERVICES, LLC • SANTA FE COMMUNITY FOUNDATION • SMITH'S MARKETPLACE • STATE FARM INSURANCE • PRESBYTERY OF SANTA FE • TRK MANAGEMENT, INC • YMCA OF THE USA

## WHY THE Y RAISES FUNDS... YOUR DOLLARS, YOUR IMPACT

- To give **250** kids & adults \$100,000 in scholarships - 80% of which helps 100 kids attend Afterschool and Camp;
- To give **665** teens at the Española YMCA Teen Center \$50,000 worth of enriching, unfunded programming;
- To give **661** teens served at Los Alamos YMCA Teen Center a chance to participate in \$20,000 worth of unfunded programs.



**MORE GIVING BACK**  
**The Y. So Much More™**