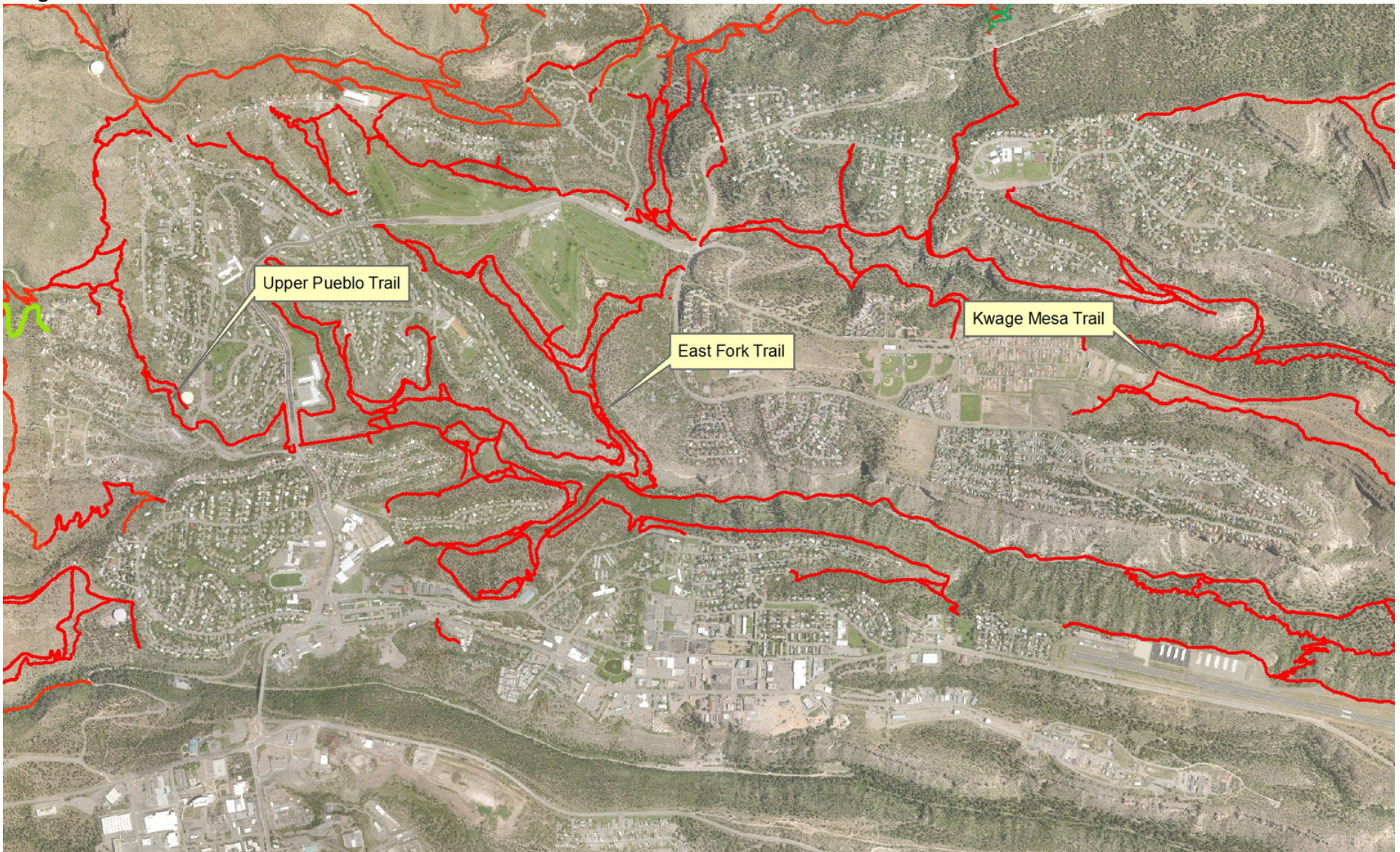


2014 Y Earth Service Corps Summary Report

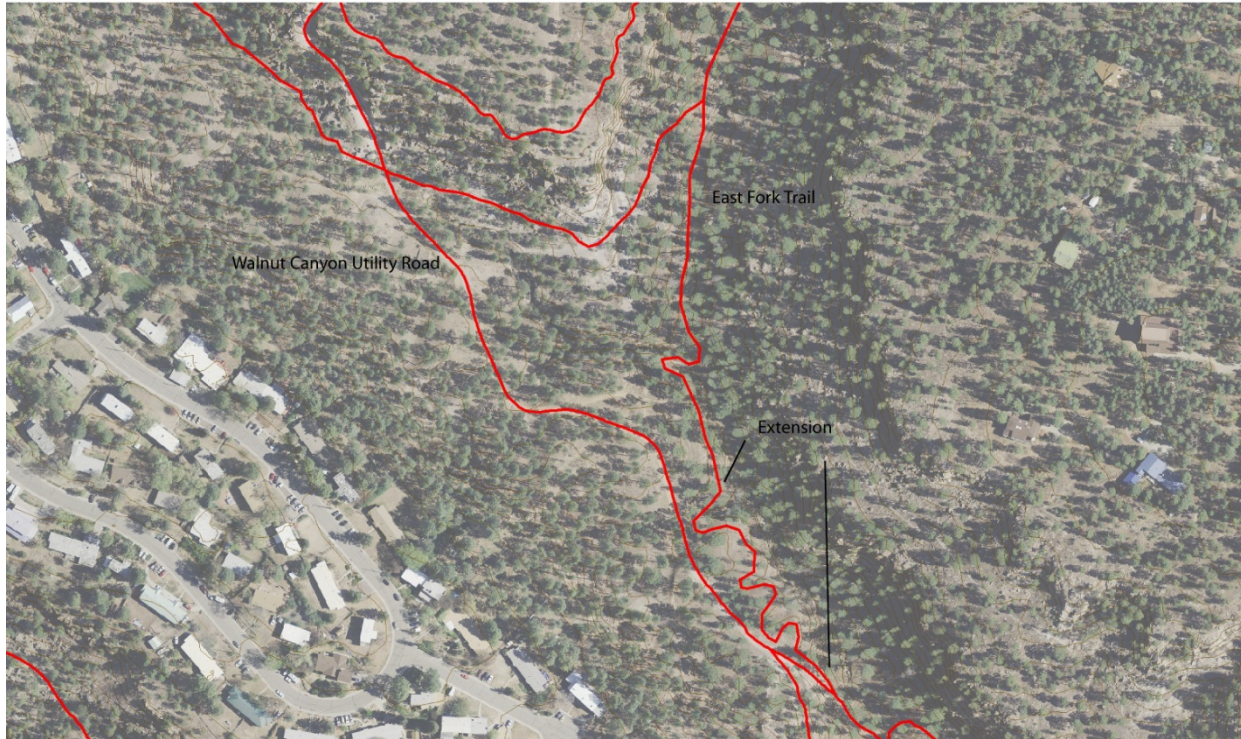
The **Y Earth Service Corps** program, partly funded by the Delle Foundation, was led by two directors and served 18 youth ages 11 to 14, who volunteered an average of 75 hours each this summer, providing a total of 1,350 hours in community service. This does not include hours spent on team-building and fun activities. Since 2001, the Delle Foundation has engaged 310 community youth through the YESC program and enabled them to provide a total of 22,723 hours toward community trails and service projects.

Trail work was performed on the Upper Pueblo Trail and the East Fork Trail. **Maps of activities prepared by Los Alamos County Open Space Specialist Craig Martin follow.**



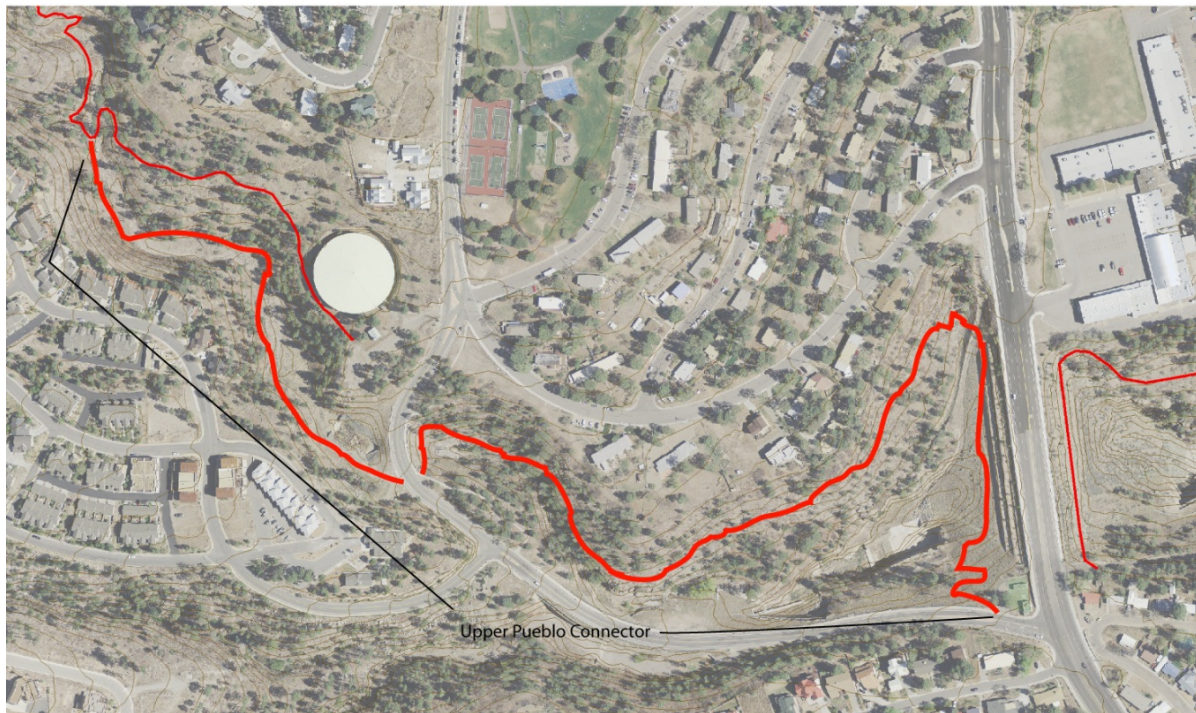
East Fork Trail Extension: Addressing a frequently heard comment at the 2013 trail workshop, “It’s annoying that so many trails dump onto roads...” Volunteer Task Force contractor Ty Horak designed an extension of the East Fork Trail to eliminate the need to travel on the Walnut Canyon Utility Road. This project was completed by the Los Alamos Family YMCA’s Y Earth Service Corps. The YESC built about 600 feet of new trail, designed to follow the contour of the landscape and to effectively shed water during storms.

EAST FORK TRAIL EXTENSION



Upper Pueblo Connector Trail: A long-standing need of the Los Alamos Trail Network has been a trail connection between the Perimeter Trail network on the outskirts of town and the central trails near the aquatic center and downtown. Ty Horak designed a connector through Pueblo Canyon on some very challenging terrain. The east half of the trail was a project of the Los Alamos Tuff Riders Mountain Bike Club and the Y Earth Service Corps built the west half. The trail construction was about 900 feet of new trail including retaining walls. This work provided a mentoring opportunity for the Youth Conservation Corps to work with YESC.

UPPER PUEBLO CONNECTOR



Camping, work and play...

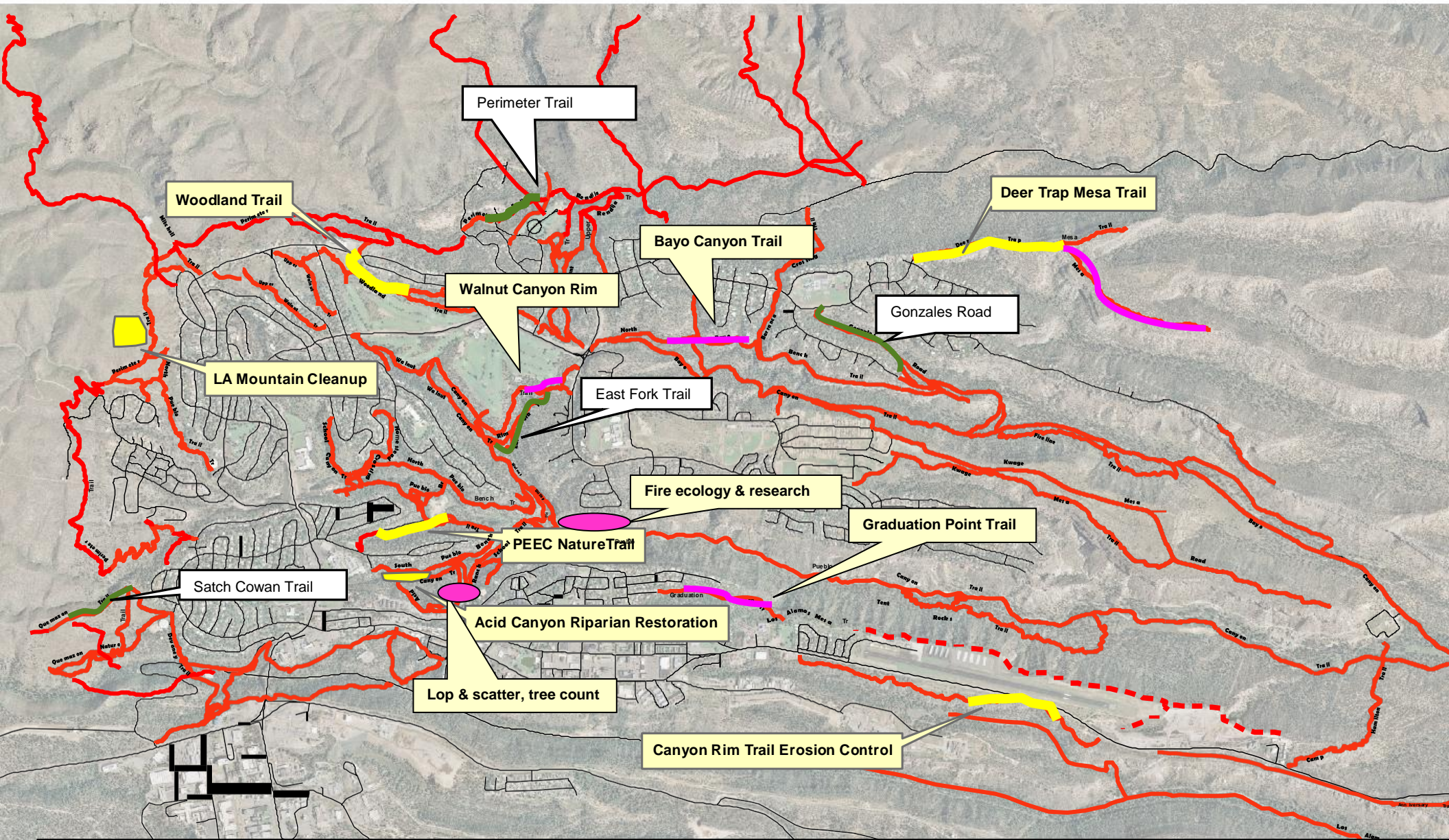


Fun Activities



Fun In The Field





YESC 2010-yellow
 2011-pink, Bandelier/Burnt Mesa Trail 2 miles
 2012-green, Espanola Humane Society, PEEC nature play area, Tesuque Farms, built planters.

